

DRH Series Broadband Horn Antennas

Applications:

- Radiated Emissions
- Radiated Immunity
- Pre-Scan/Full Compliance

Features

FREQUENCY: DRH-118: 1–18 GHz
DRH1840: 18–40 GHz

IMPEDANCE: 50 ohms nominal

VSWR: < 1.5:1 average

CONNECTOR: DRH-118: Type N female
DRH-1840: Type K female

POLARIZATION: Linear

MAX. POWER: DRH-118: 300 watts
DRH-1840: 50 watts

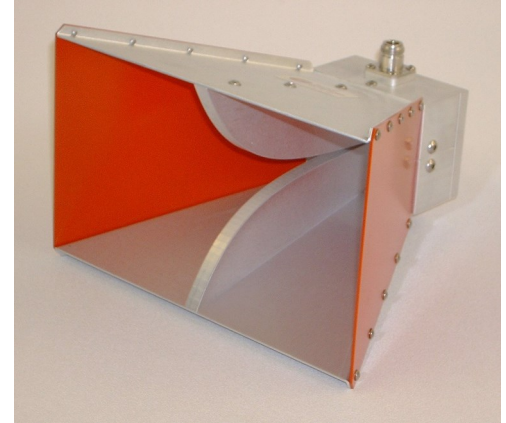
SIZE (LxWxH): DRH-118: 9 x 9.5 x 6 in, 23 x
24 x15 cm
DRH-1840: 5 x 5 x 3 in, 13 x 13
x 8 cm

WEIGHT: DRH-118: 4 lbs., 1.8 kg
DRH-1840: 1 lb., .45 kg

MOUNT: ¼-20 tripod mount

OPTIONS:

SNAP! mount
Tripod
Carrying case



DRH118 shown

SunAR RF Motion
6780 Sierra Court, Suite R
Dublin, CA 94568
925-833-9936

www.SunARrfmotion.com

DRH Series
Broadband Horn
Antennas

Plots

